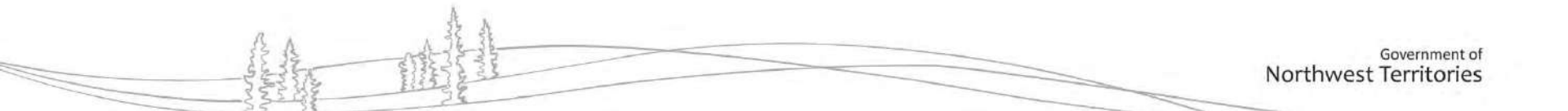




NWT Wildfire Management Evolution and Policy

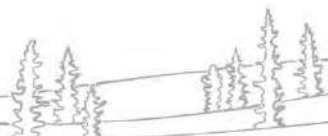
Community Prevention and Mitigation Workshop

April 2025



Overview

- History of Fire Management in NWT
- Forest Fire Management Policy
- Managing wildfires
- Understanding Natural Fire Regimes



Fire Management History



Indigenous burning



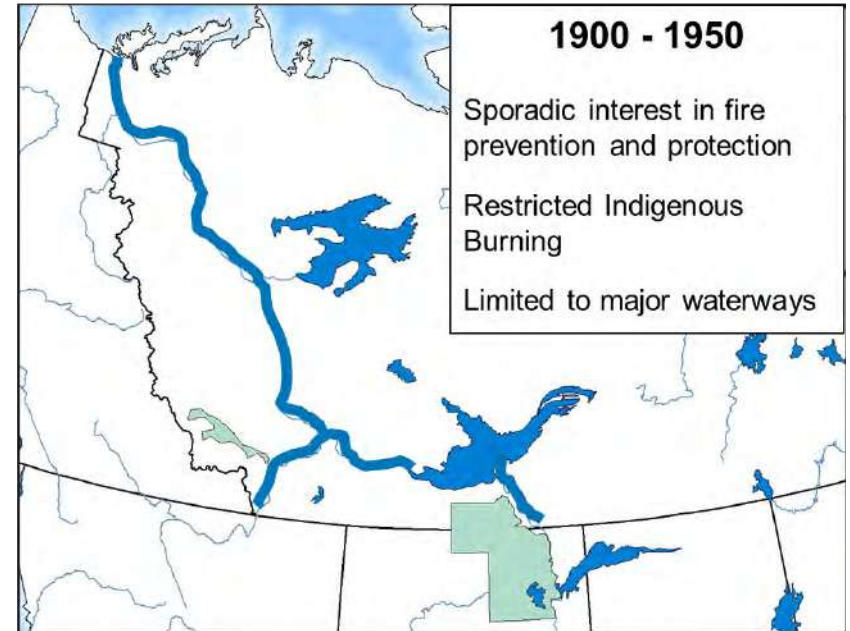
European influence



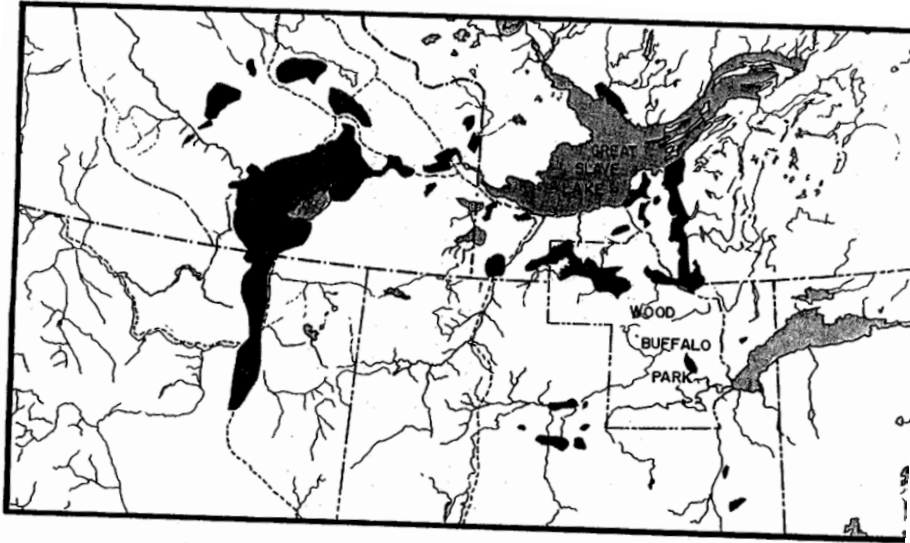
Dominion Forestry Branch (1900-1920)



Fire Rangers



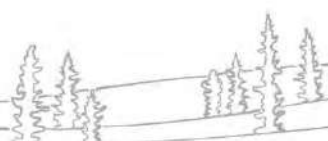
Fire Management History



- Mackenzie District – Northwest Territories & Yukon Branch
- Dept. Mines & Resources – Forest & Wildlife Division (1946)
- Mackenzie Forest Service (1959)

Figure 4.3 Some of the 1942-44 fires mapped by H. L. Holman.

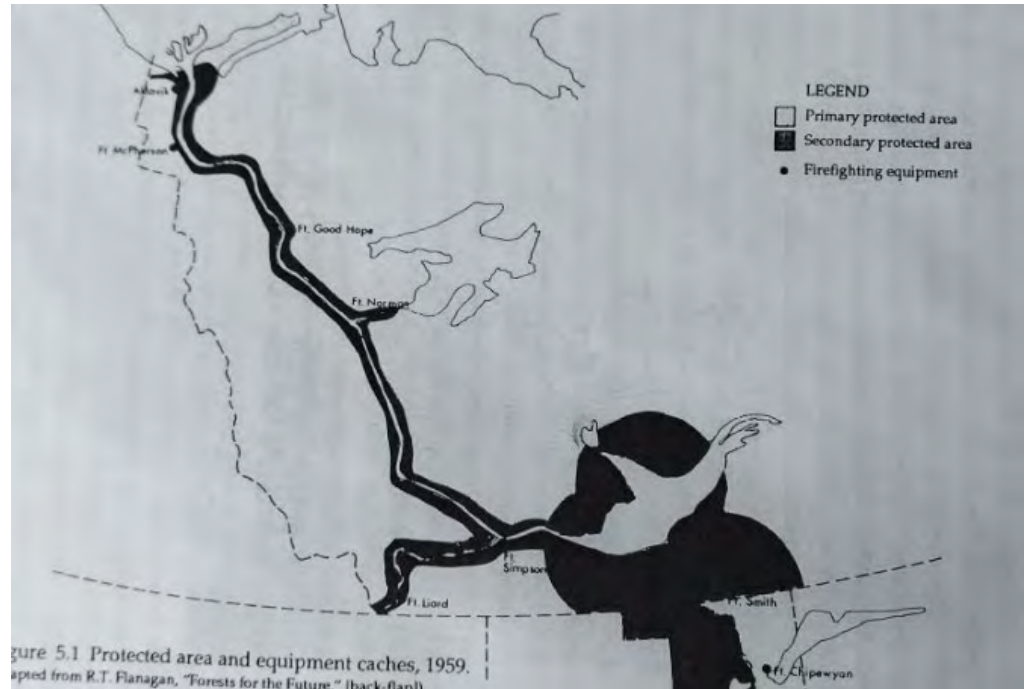
(adapted from NAC RG 39, Vol. 464, file 50050, "Report on Forest Fire Protection in the Mackenzie District, N.W.T.," 11 November 1944)



Priority Zone Concept (1-4)

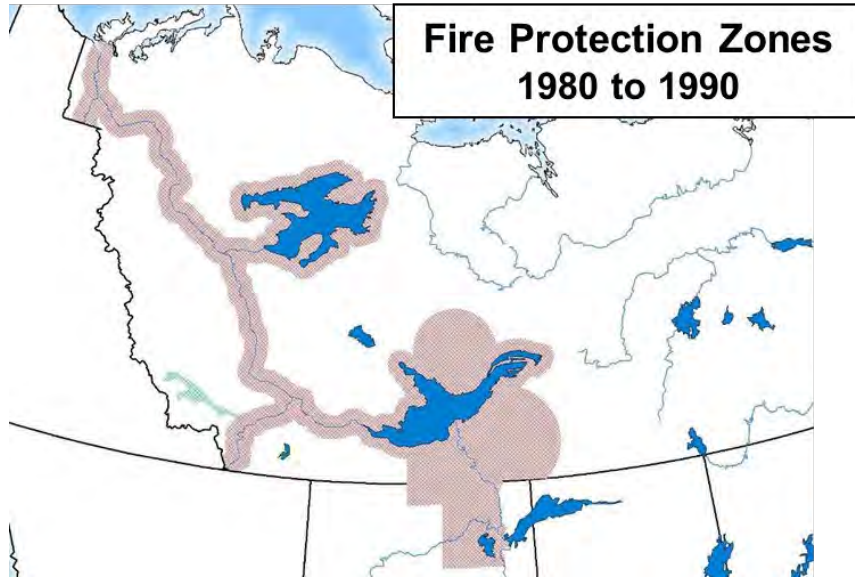
Introduced in 1971

- **Zone 1 & 2** – Primary and Secondary Priorities
 - settlements and industrial activities
(mines, lodges, timber and highways)
- **Zone 3** – wildlife and trapping areas
- **Zone 4** – all other land



Priority Zone Concept

Amended in 1979 (implemented in '83)



**Fire Attack Zone 1
(FAZ)**

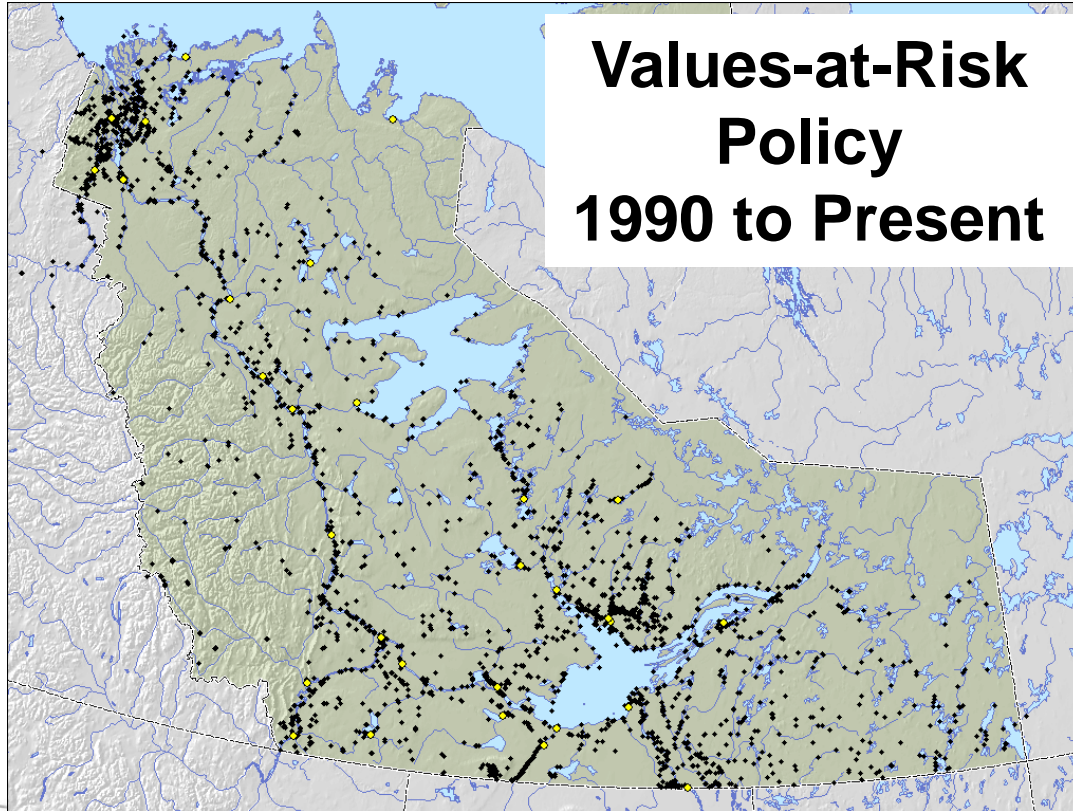


**Observation Zone
(OBZ)**



**1987 – Fire
Transferred to GNWT**

Forest Fire Management Policy ^{53.04}



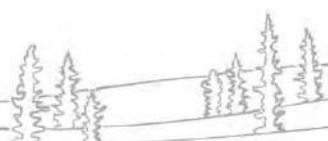
- Three years to develop
- Every community consulted
- Indigenous leaders and stakeholders part of working group.

Forest Fire Management Policy

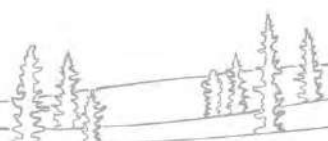


- Fire should be recognized as a significant and **natural phenomenon** .
- Fire management should strive to attain forest management and other **land use objectives** in a manner that considers environmental, social and economic criteria.
- The first consideration in the allocation of fire management resources shall be the **protection of human life**.
- Fire management should draw upon local and **traditional knowledge**.

Oversuppression

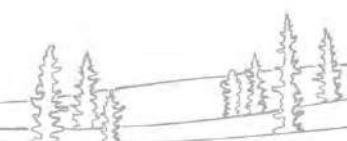
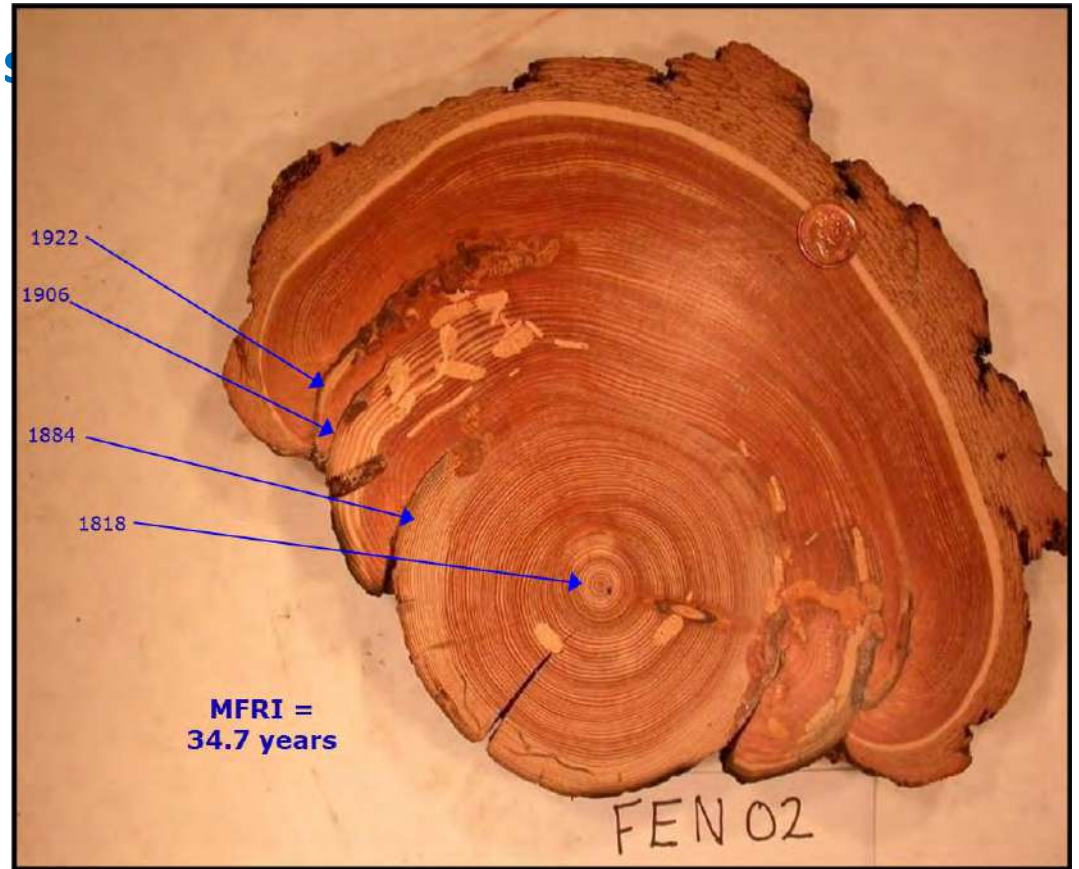


Fire Scars and Fire History



Tree Ring Analysis

Quantifying Fire Intervals

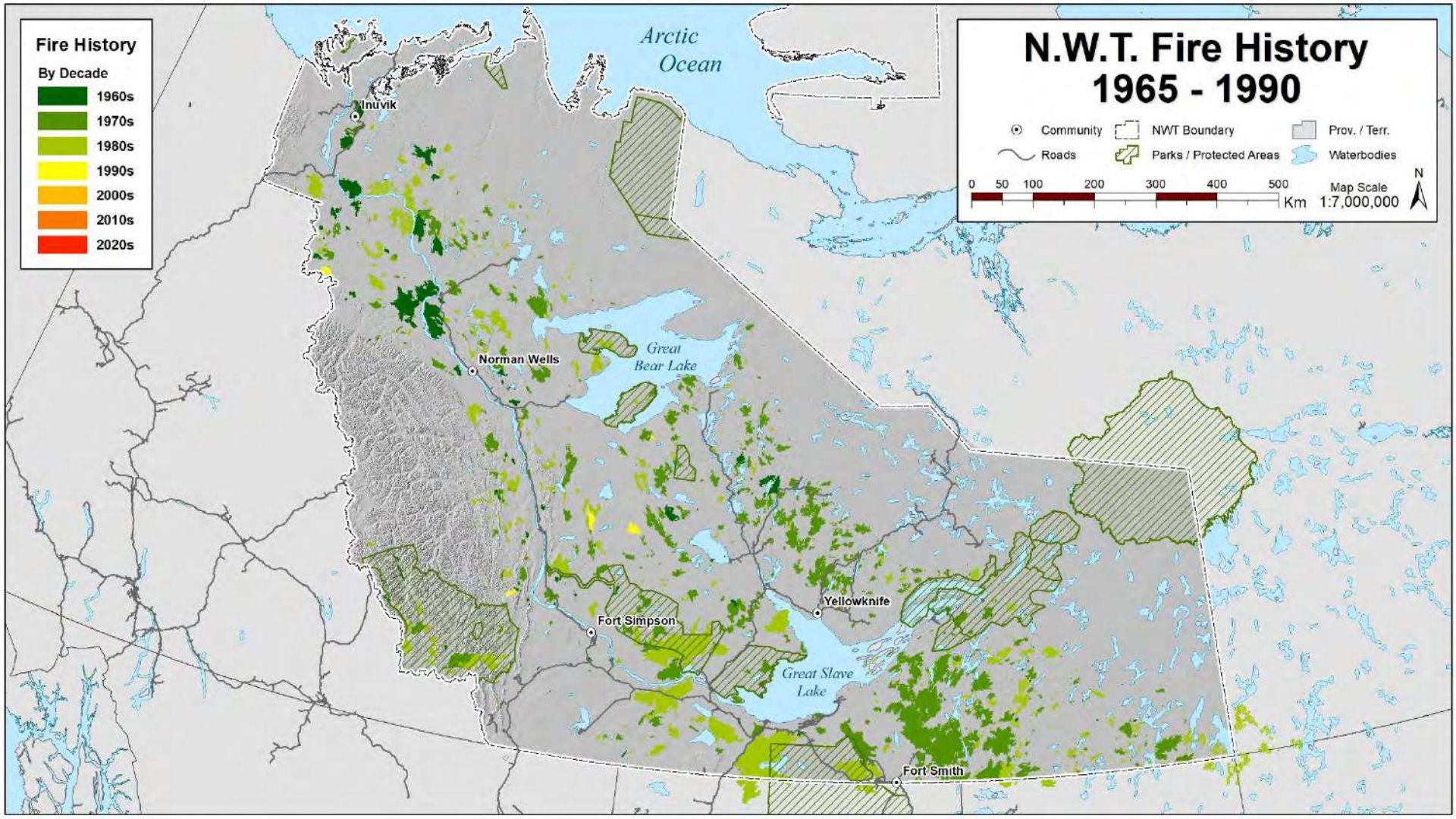
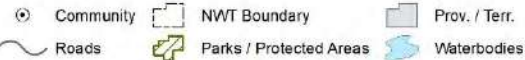


Fire History

By Decade



N.W.T. Fire History 1965 - 1990



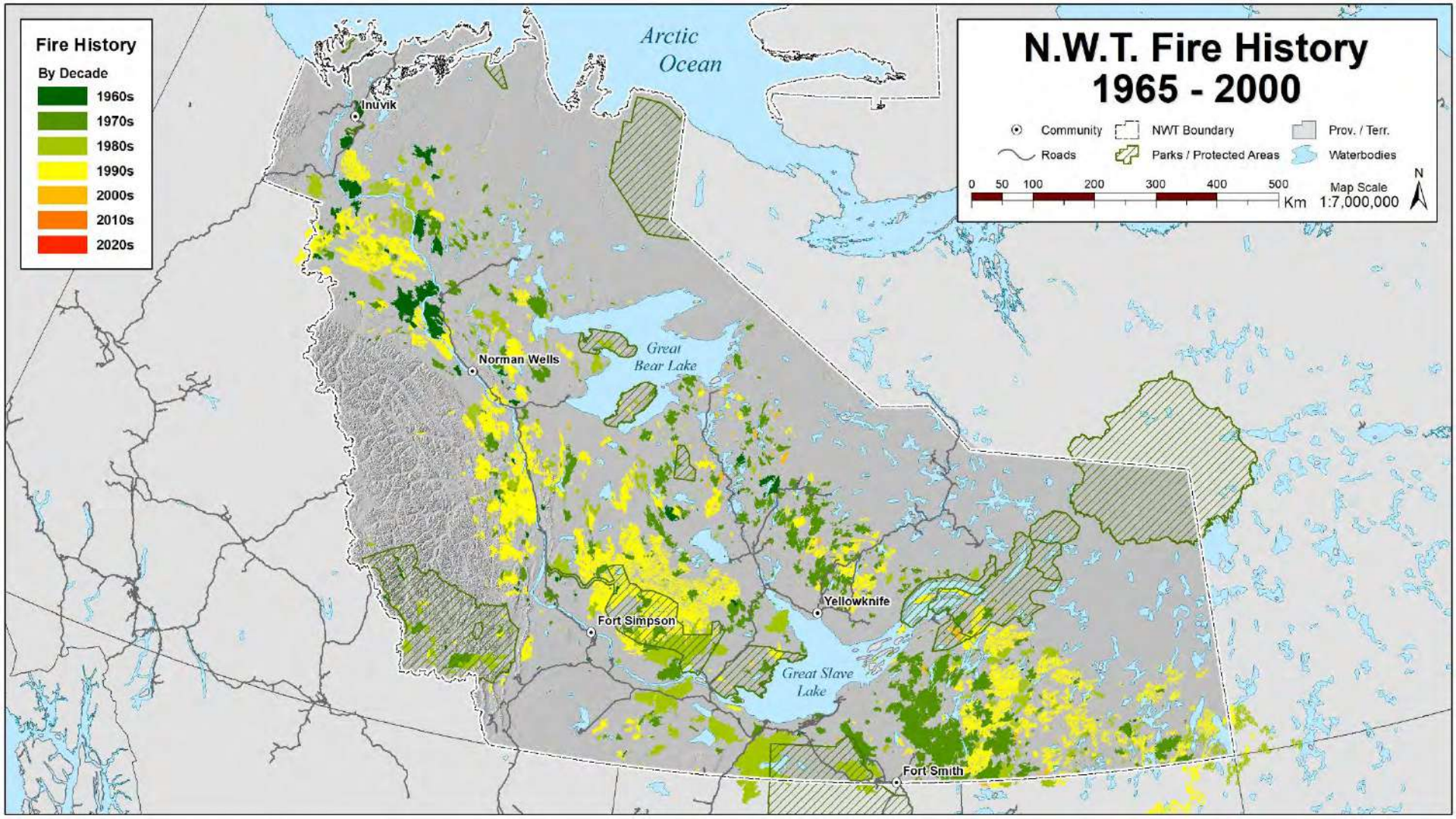
Fire History

By Decade



N.W.T. Fire History 1965 - 2000

- Community
- NWT Boundary
- Prov. / Terr.
- Roads
- Parks / Protected Areas
- Waterbodies

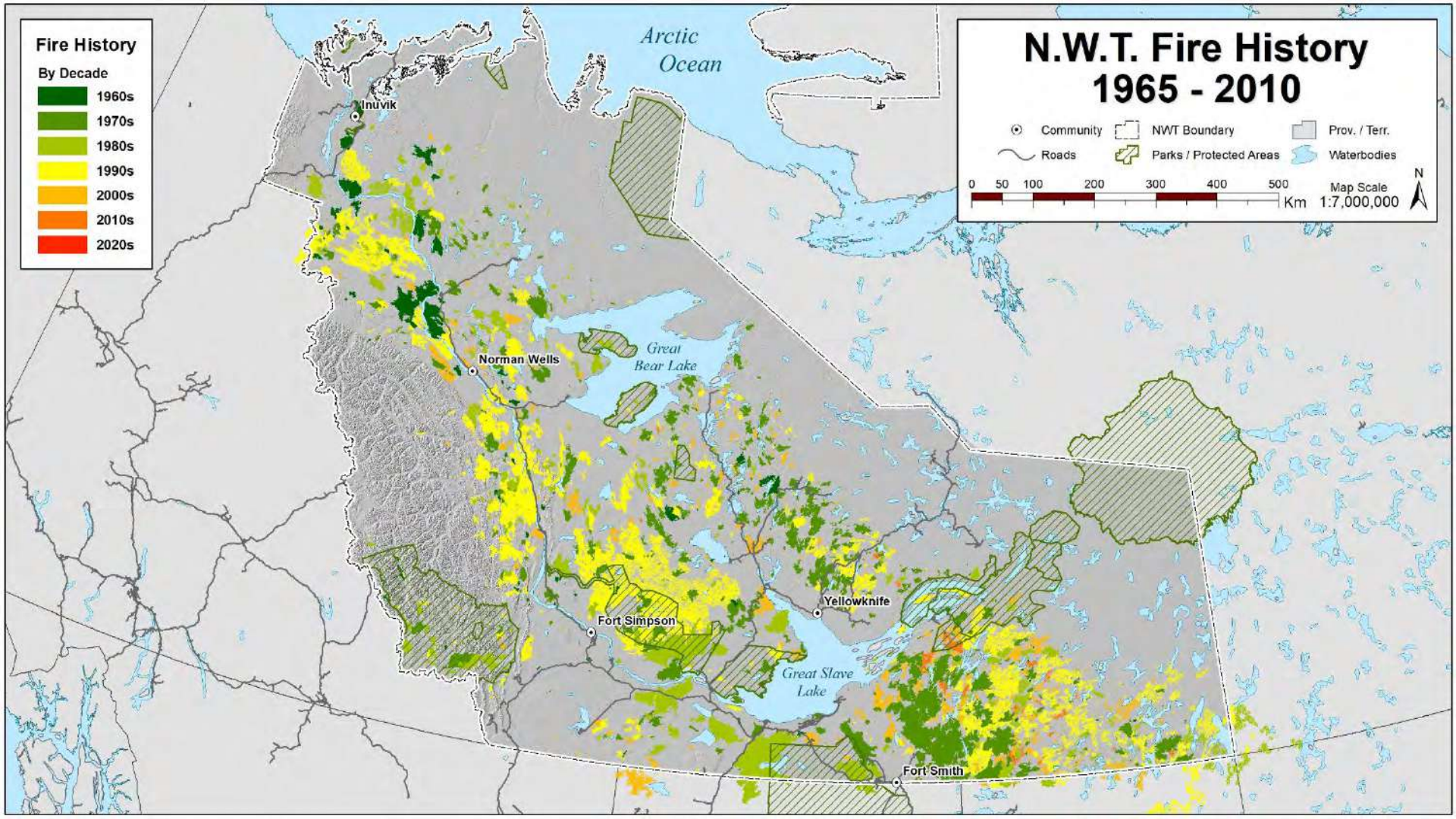
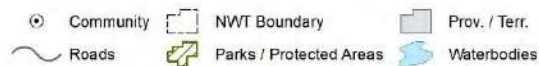


Fire History

By Decade



N.W.T. Fire History 1965 - 2010



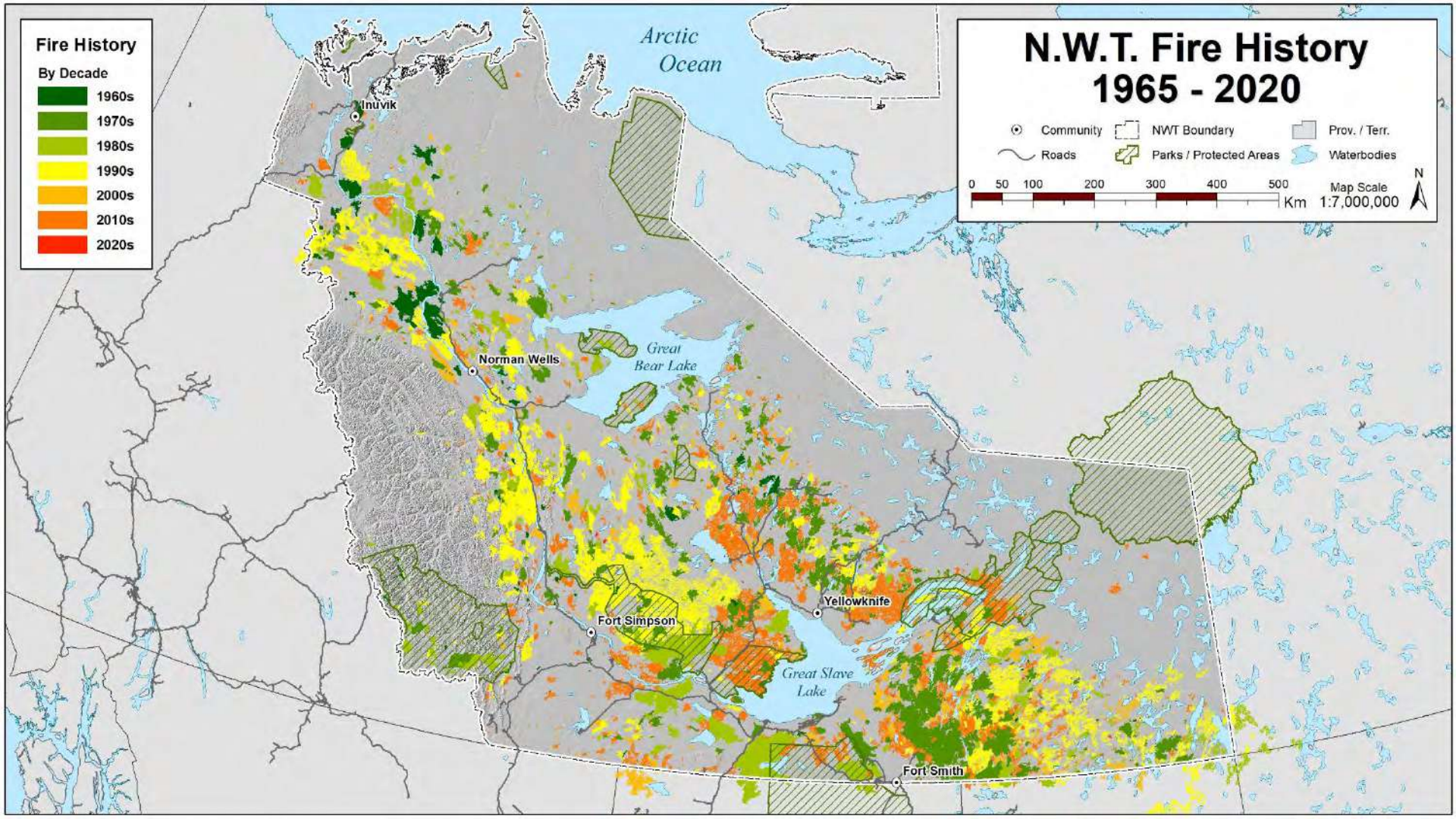
Fire History

By Decade



N.W.T. Fire History 1965 - 2020

- Community
- NWT Boundary
- Prov. / Terr.
- Roads
- Parks / Protected Areas
- Waterbodies



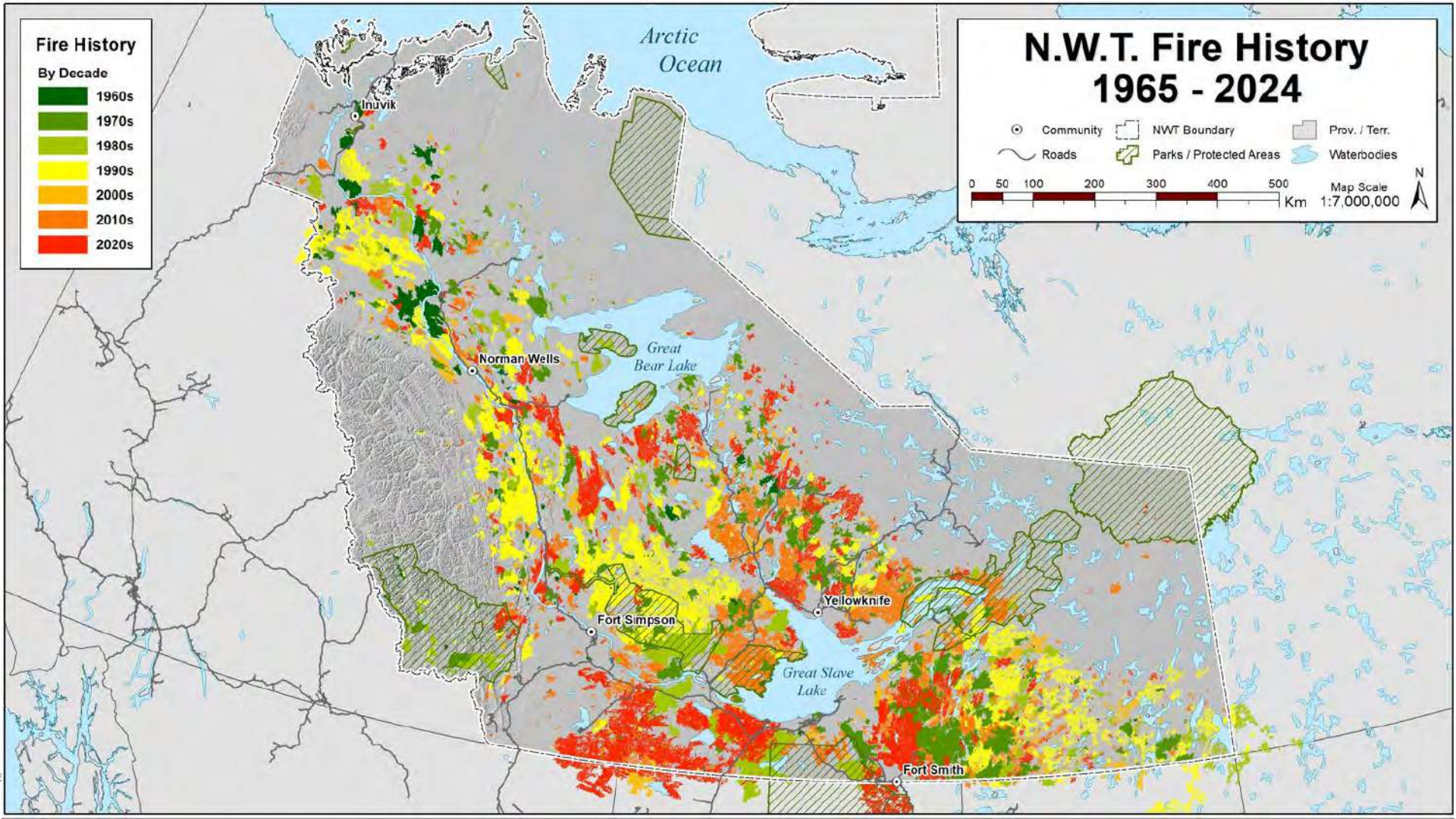
Fire History

By Decade



N.W.T. Fire History 1965 - 2024

- Community
- NWT Boundary
- Prov. / Terr.
- Roads
- Parks / Protected Areas
- Waterbodies



Questions - Discussion

